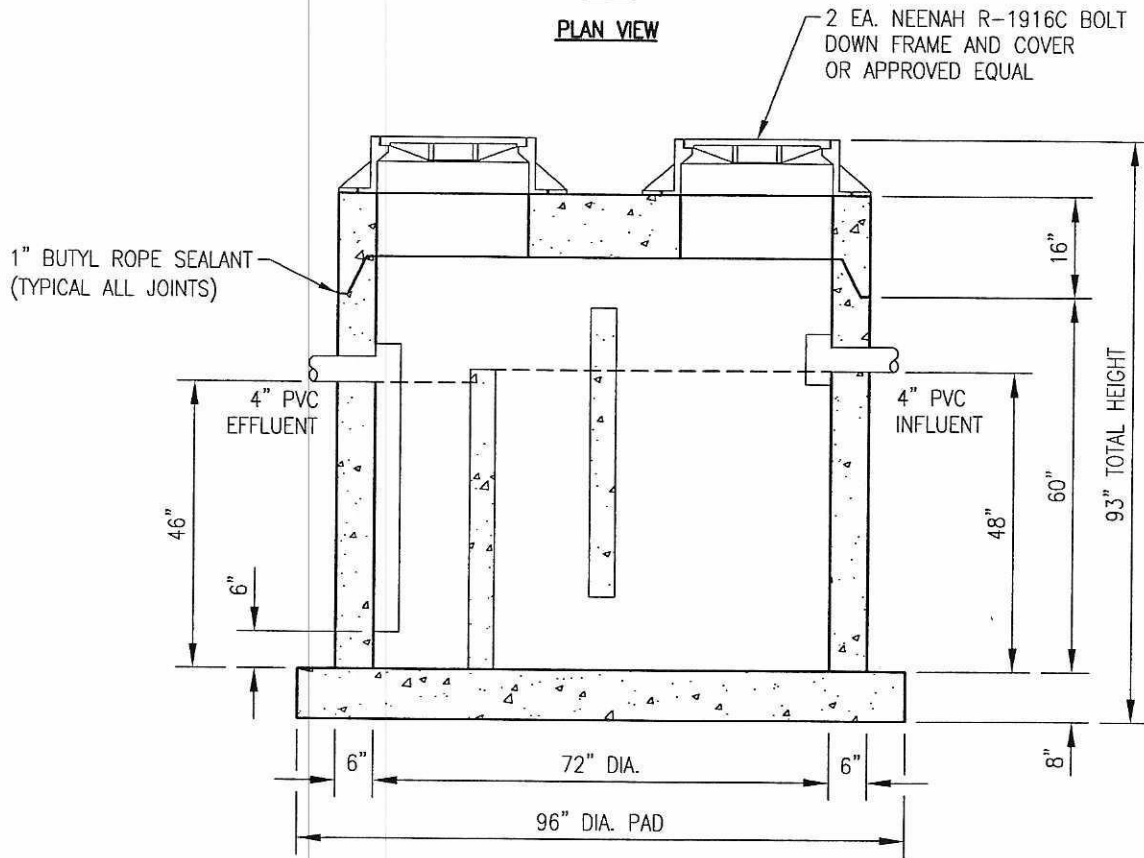


PLAN VIEW



SECTION

GREASETRAP SHALL BE CAPABLE OF WITHSTANDING H-20 LOADING, IF LOCATED IN A PAVEMENT AREA.

750 GALLON REINFORCED CONCRETE GREASE INTERCEPTOR



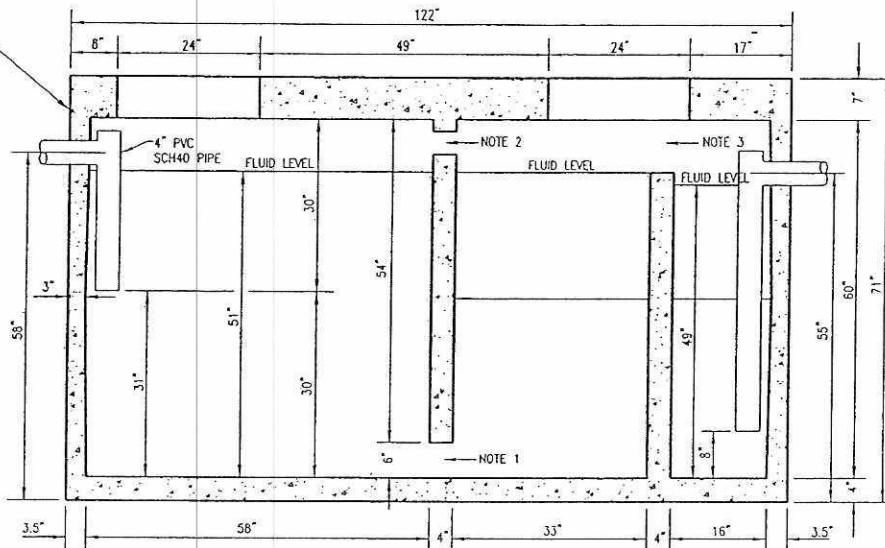
DATE: 7/26/06
DRAWN BY: DAB

750 GALLON REINFORCED
CONCRETE GREASE INTERCEPTOR

GREASE TRAP
(750 GALLON)

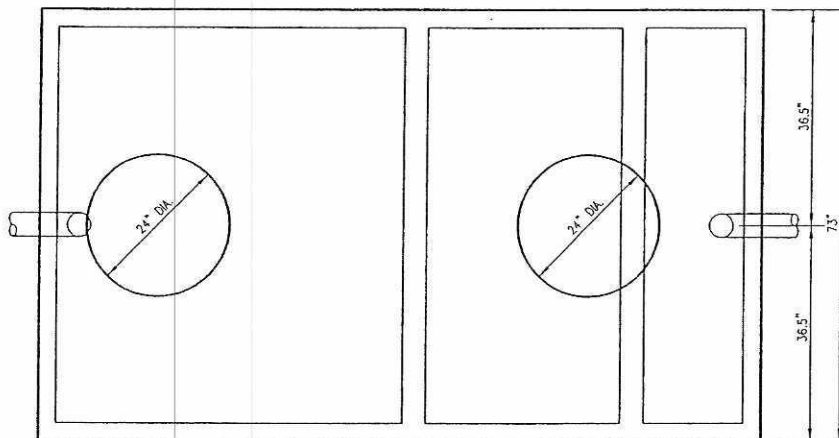
APPENDIX A

ADD RISER SECTIONS TO GREASE INTERCEPTOR PER VILLAGE OF SWANSEA SEWER REQUIREMENTS TO ACHIEVE FINISH GRADE ELEVATION



NOTE 1: 6"H x 32"W OPENING AT BOTTOM CENTERED
 NOTE 2: 2-4" DIAMETER HOLES - 2" DOWN - 4" OFF CENTER - 8" BETWEEN HOLES
 NOTE 3: 9"H x 24"W OPENING AT TOP CENTERED

SIDE SECTION



TOP VIEW

WEIGHT: 14,670 LBS

NOTE:
 THIS TANK IS NOT DESIGNED FOR VEHICULAR TRAFFIC. IF USED IN TRAFFIC AREAS A REINFORCED CONCRETE SLAB MUST SPAN THE TANK AND OVERDIG TO PROTECT THE TANK.

OPTIONS:
 GRADE RISERS (DONUTS)
 FRAME & COVERS
 LARGER INLET & OUTLET
 BIO-GEM ENZYME ADDITIVE
 SEALANT

1500 GALLON REINFORCED CONCRETE GREASE INTERCEPTOR

EXCAVATION SIZE: 11'L x 7'W



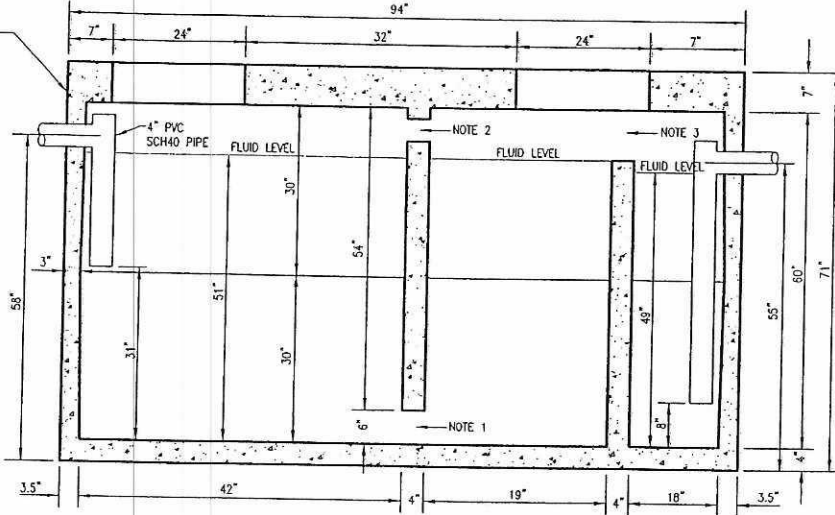
DATE: 1/21/05
 DRAWN BY: DLS

1500 GALLON REINFORCED
 CONCRETE GREASE INTERCEPTOR

GREASE TRAP
 (1500 GALLON)

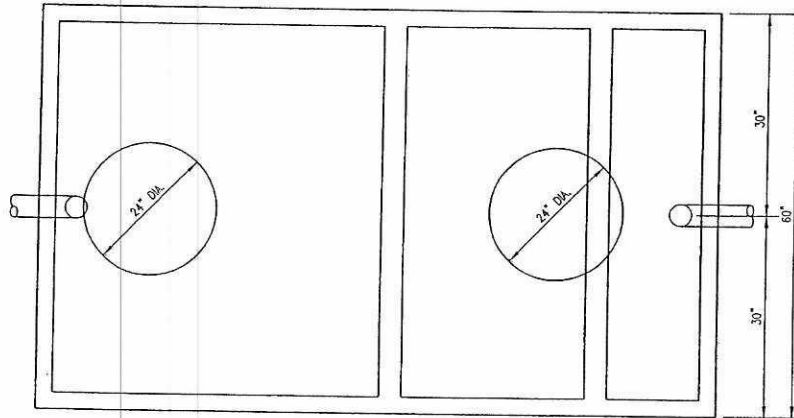
APPENDIX "B"

ADD RISER SECTIONS TO GREASE INTERCEPTOR PER VILLAGE OF SWANSEA SEWER REQUIREMENTS TO ACHIEVE FINISH GRADE ELEVATION



- NOTE 1: 6"H x 32"W OPENING AT BOTTOM CENTERED
- NOTE 2: 2-4" DIAMETER HOLES - 2" DOWN - 4" OFF CENTER - 8" BETWEEN HOLES
- NOTE 3: 9"H x 24"W OPENING AT TOP CENTERED

SIDE SECTION



TOP VIEW

WEIGHT: 14,670 LBS

NOTE:
THIS TANK IS NOT DESIGNED FOR VEHICULAR TRAFFIC. IF USED IN TRAFFIC AREAS A REINFORCED CONCRETE SLAB MUST SPAN THE TANK AND OVERDIG TO PROTECT THE TANK.

OPTIONS:
GRADE RISERS (DONUTS)
FRAME & COVERS
LARGER INLET & OUTLET
BIO-GEM ENZYME ADDITIVE
SEALANT

1000 GALLON REINFORCED CONCRETE GREASE INTERCEPTOR

EXCAVATION SIZE: 9'L x 6'W



DATE: 1/21/05
DRAWN BY: DLS

1000 GALLON REINFORCED
CONCRETE GREASE INTERCEPTOR

GREASE TRAP
(1000 GALLON)